

ILO Global Consciousness Direct Assessment Results

2018-2019

ILO Task Force

Dr. Bridget Herrin

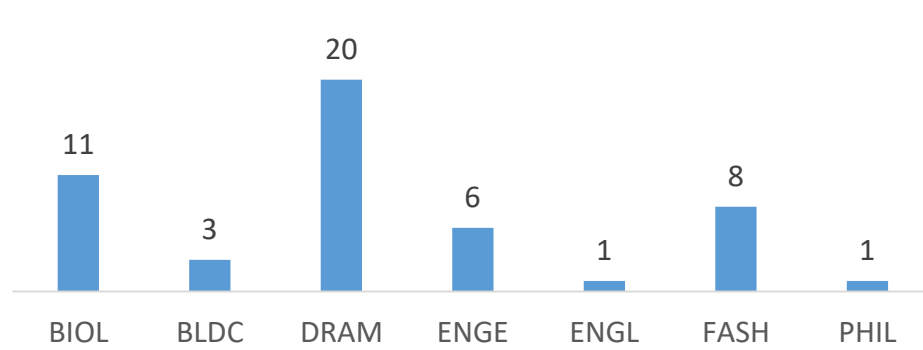
Methodology

- Open ended question format
- Online survey
- Invitation sent to all students enrolled in identified CRNs of Task force members (n= 359)
- 83 Total Responses
- Incomplete responses and those who we were unable to match were removed
- Final results included responses from 50 students
- Responses were scored using a rubric

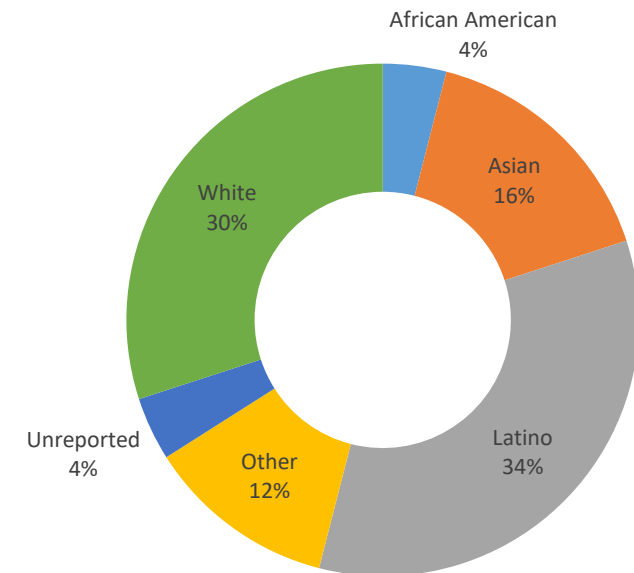
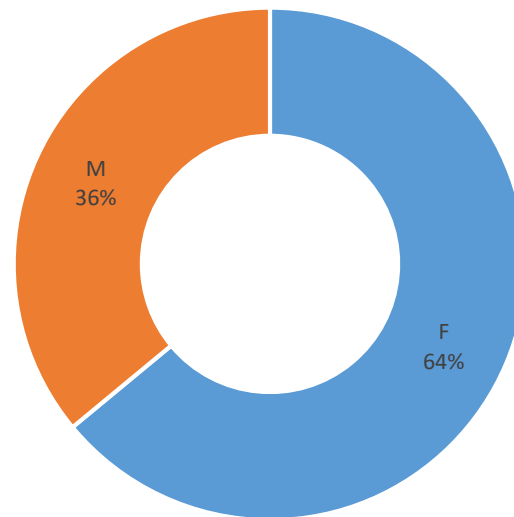
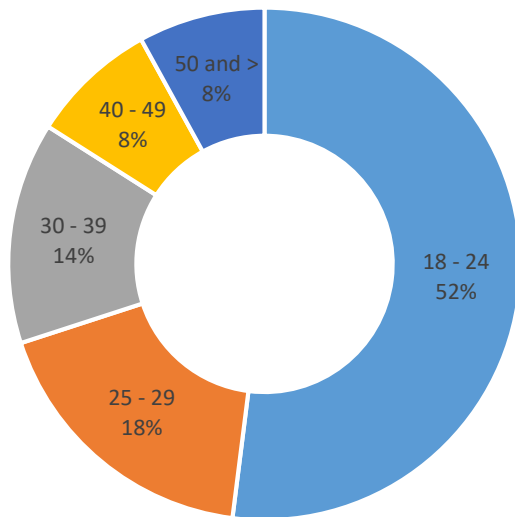
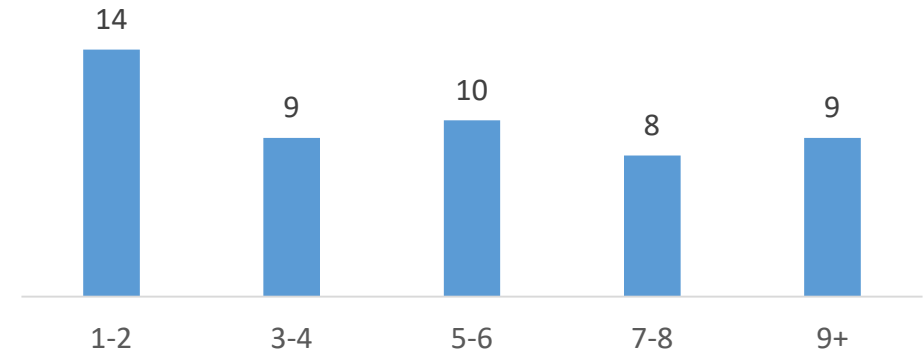
Question	0	1	2	3
Describe an issue that has local, national, and global impact	Not answered or answer is irrelevant to question asked.	The issue is identified, but there is little or no description of its complexities	The issue identified and described suggests a moderate understanding of the complexities associated with local, national and global concerns	The issue identified and described suggests a good understanding of the complexities associated with local, national and global concerns
Please provide 2-3 examples of how you demonstrate appreciation and respect for diversity	Not answered or answer is irrelevant to question asked.	Behavioral examples reveal an awareness and values that suggest a moderate level of appreciation and respect for diversity	Behavioral examples reveal an awareness and values that suggests an undeveloped level of appreciation and respect for diversity	Behavioral examples reveal an awareness and values that suggest a high level of appreciation and respect for diversity
How has your experience at Mesa changed your view of the world?	Not answered or answer is irrelevant to question asked.	Coursework or experiences at Mesa enhanced students understanding of other people's culture, values, beliefs, and perceptions	Coursework or experiences at Mesa did little to inform students understanding of other people's culture, values, beliefs, and perceptions	Coursework or experiences at Mesa helped shape student's appreciation of other people's cultures, values, beliefs, and perceptions
Provide examples of how you would promote equity and social justice in your community.	Not answered or answer is irrelevant to question asked.	Partially developed examples demonstrate the potential to promote equity and social justice	Vague examples or conceptual idea that may espouse equity and social justice	concrete examples demonstrate an ability to promote equity and social justice

Respondent Profile

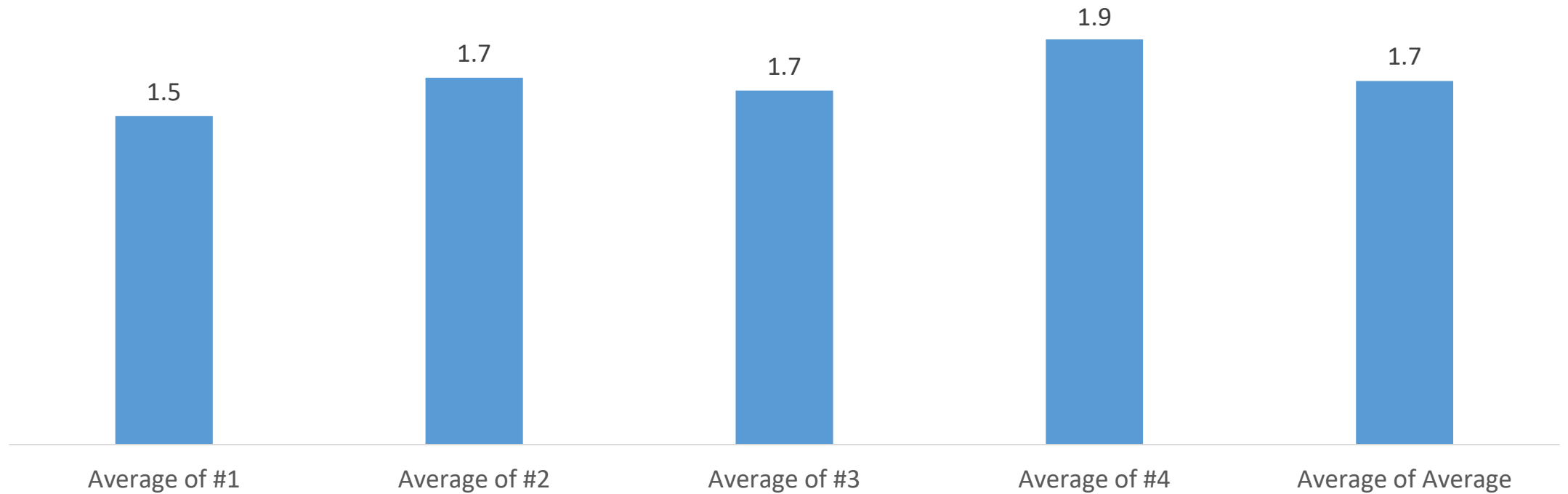
Subject



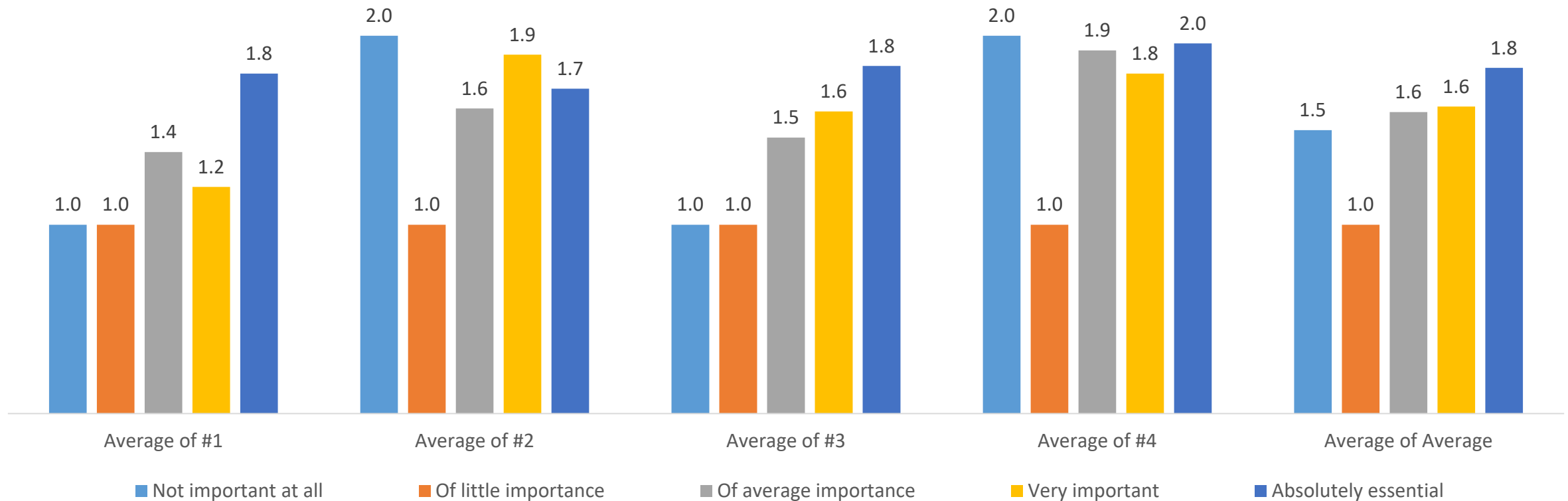
Number Semesters at SDCCD



Overall results

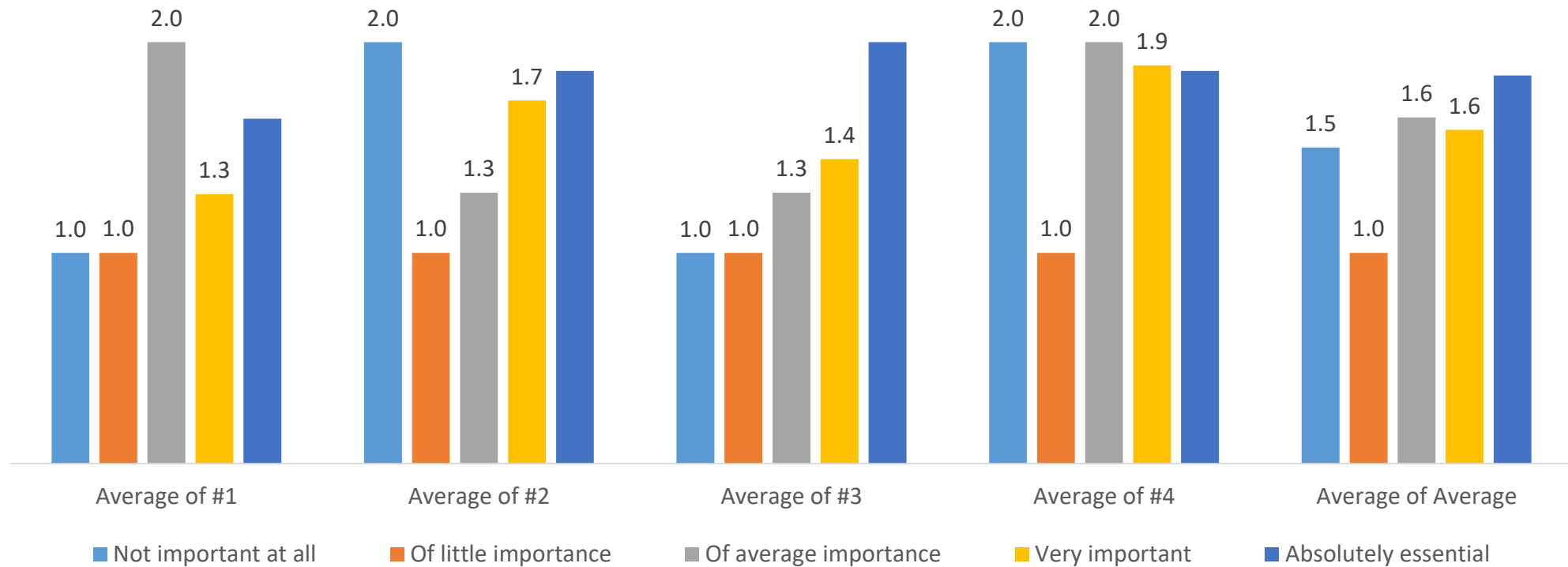


Results by Value of Diversity



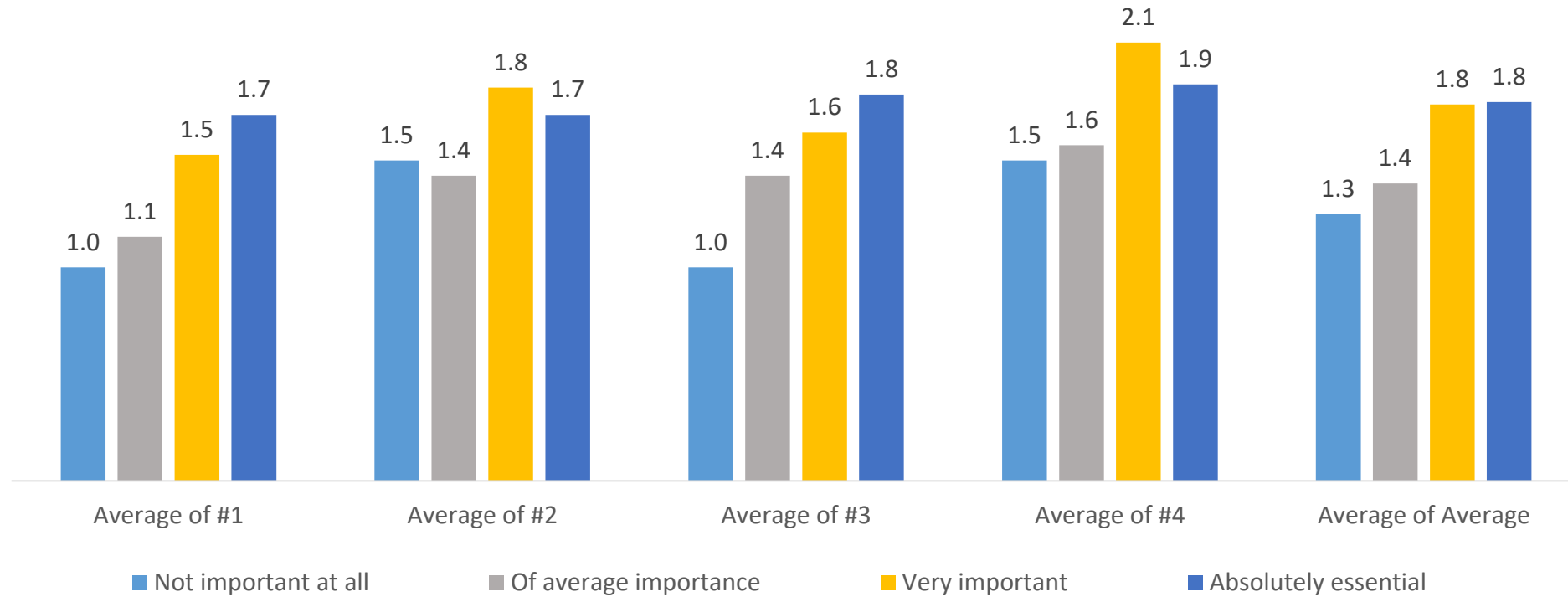
Not important at all	Of little importance	Of average importance	Very important	Absolutely essential
1	1	13	10	25

Results by Value of Social Justice



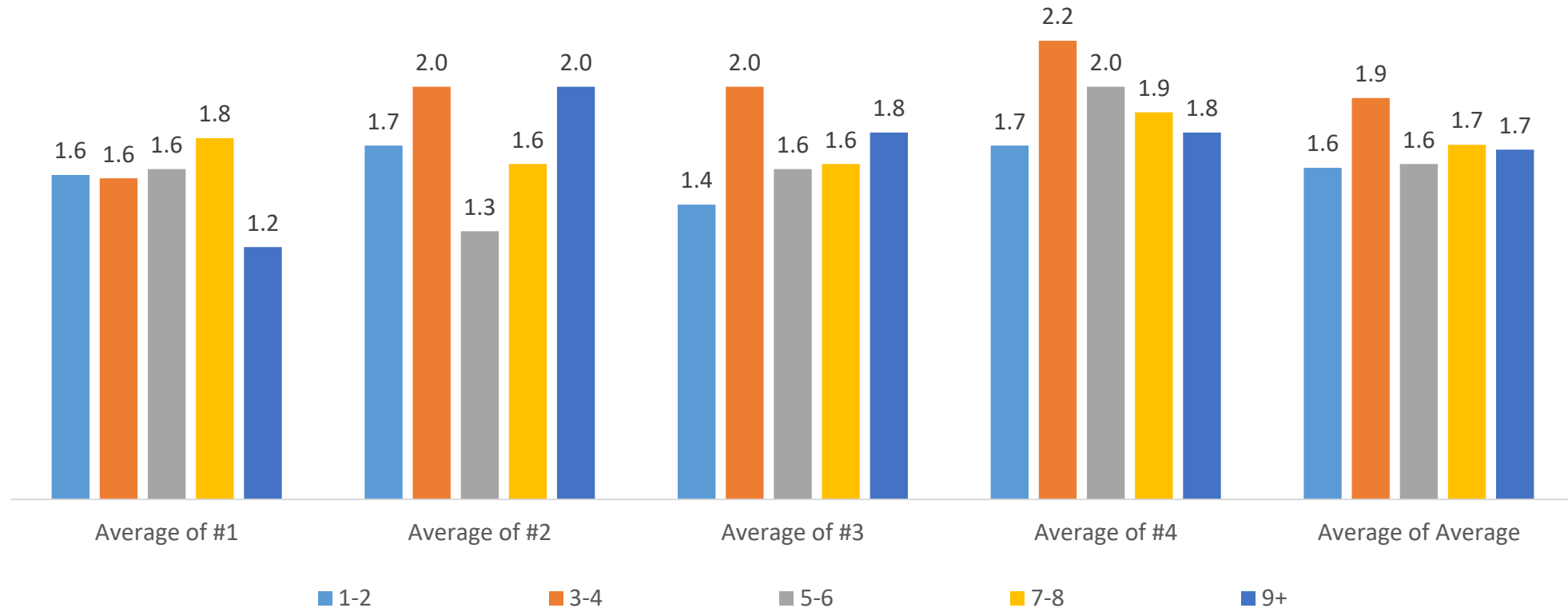
Not important at all	Of little importance	Of average importance	Very important	Absolutely essential
1	1	7	18	22

Results by Value of Equity



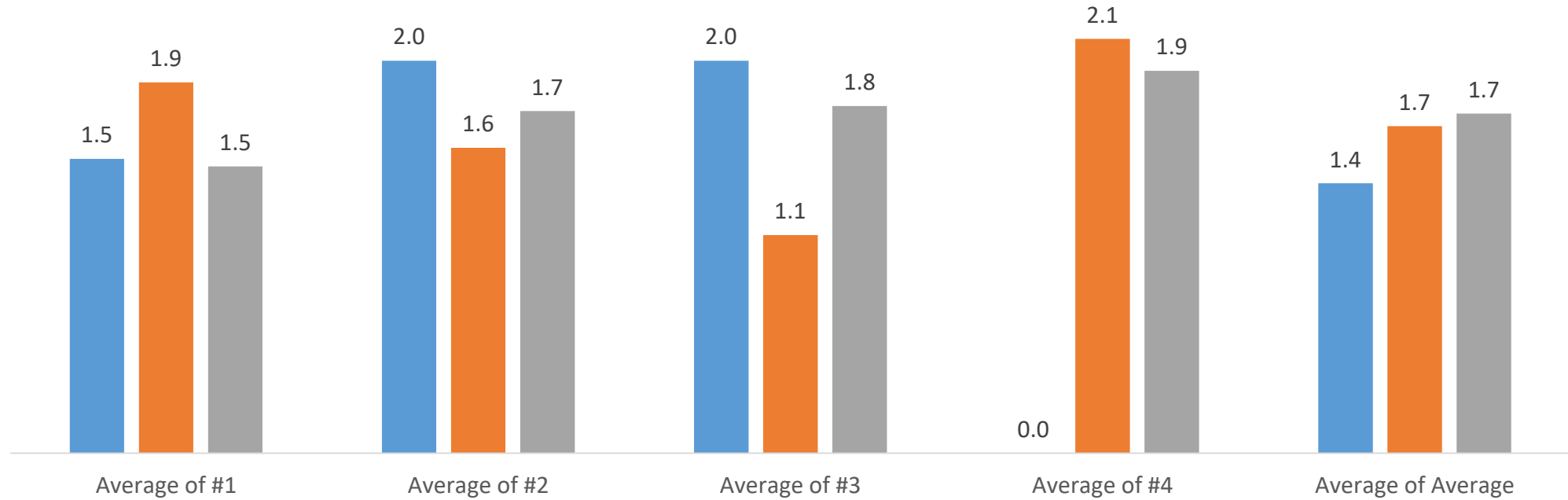
Not important at all	Of average importance	Very important	Absolutely essential
2	7	19	21

Results by Number of Terms



1-2	3-4	5-6	7-8	9+
14	9	10	8	9

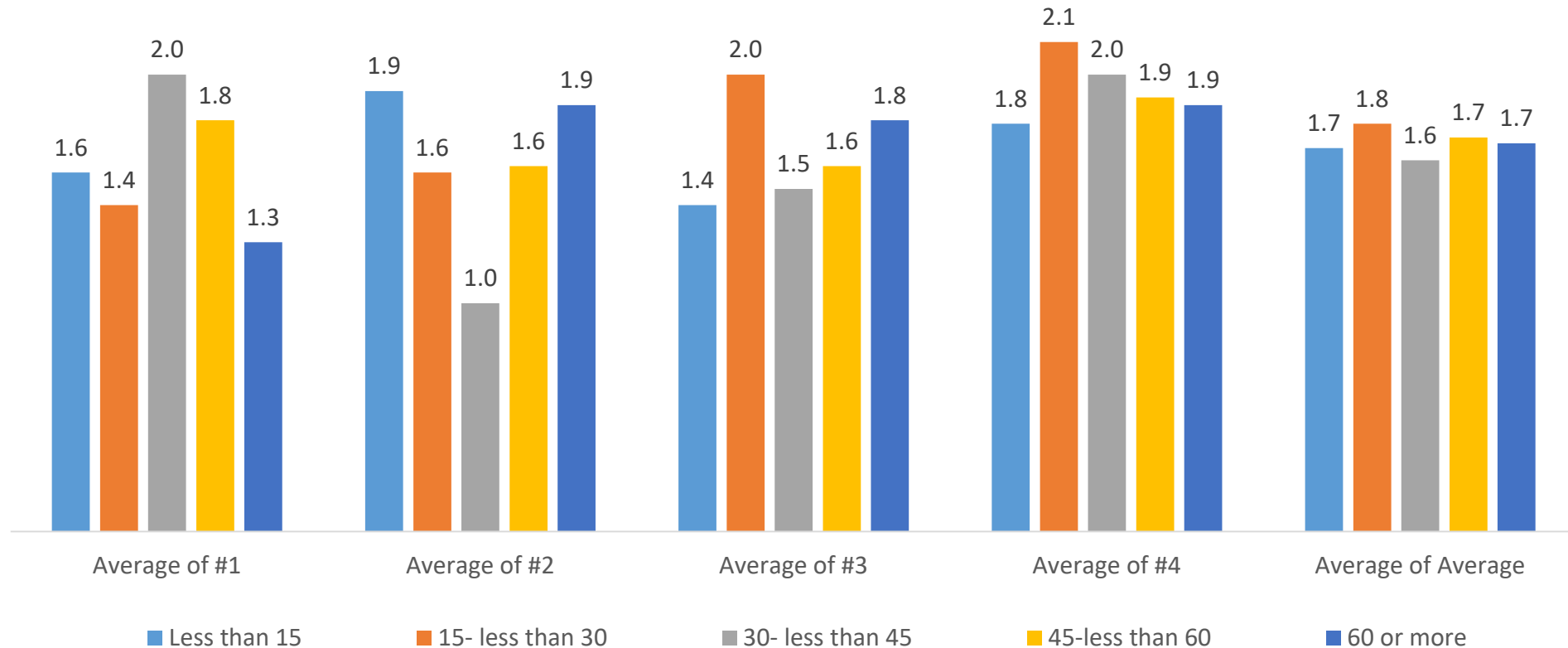
By Cumulative GPA



■ Less than 2.0 ■ 2.0-Less than 3.0 ■ 3.0 or higher

Less than 2.0	2.0-Less than 3.0	3.0 or higher
2	9	39

By Cumulative Units



Less than 15	15- less than 30	30- less than 45	45-less than 60	60 or more
14	7	4	10	15

By Subject

