

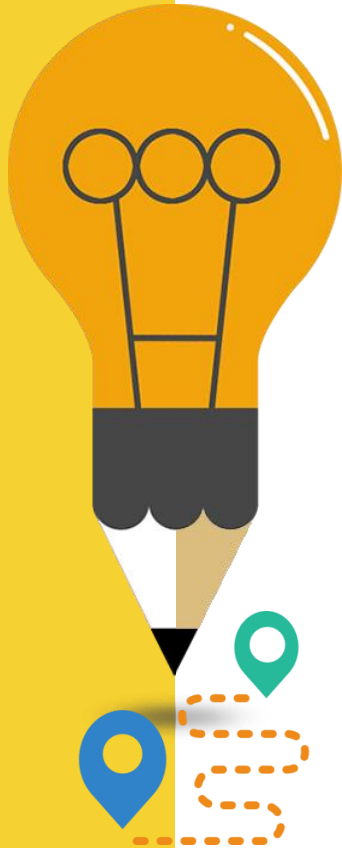


# Strong Workforce, Regional Project: Pathway Navigation

Claudia Estrada-Howell

Transfer | Career | Evaluations Supervisor

# Agenda



**01**

## **What is a regional project**

Strong Workforce Recommendations

**02**

## **Pathway Navigation**

Guided Pathways, SSSP, Equity

**03**

## **Request For Applications (RFA)**

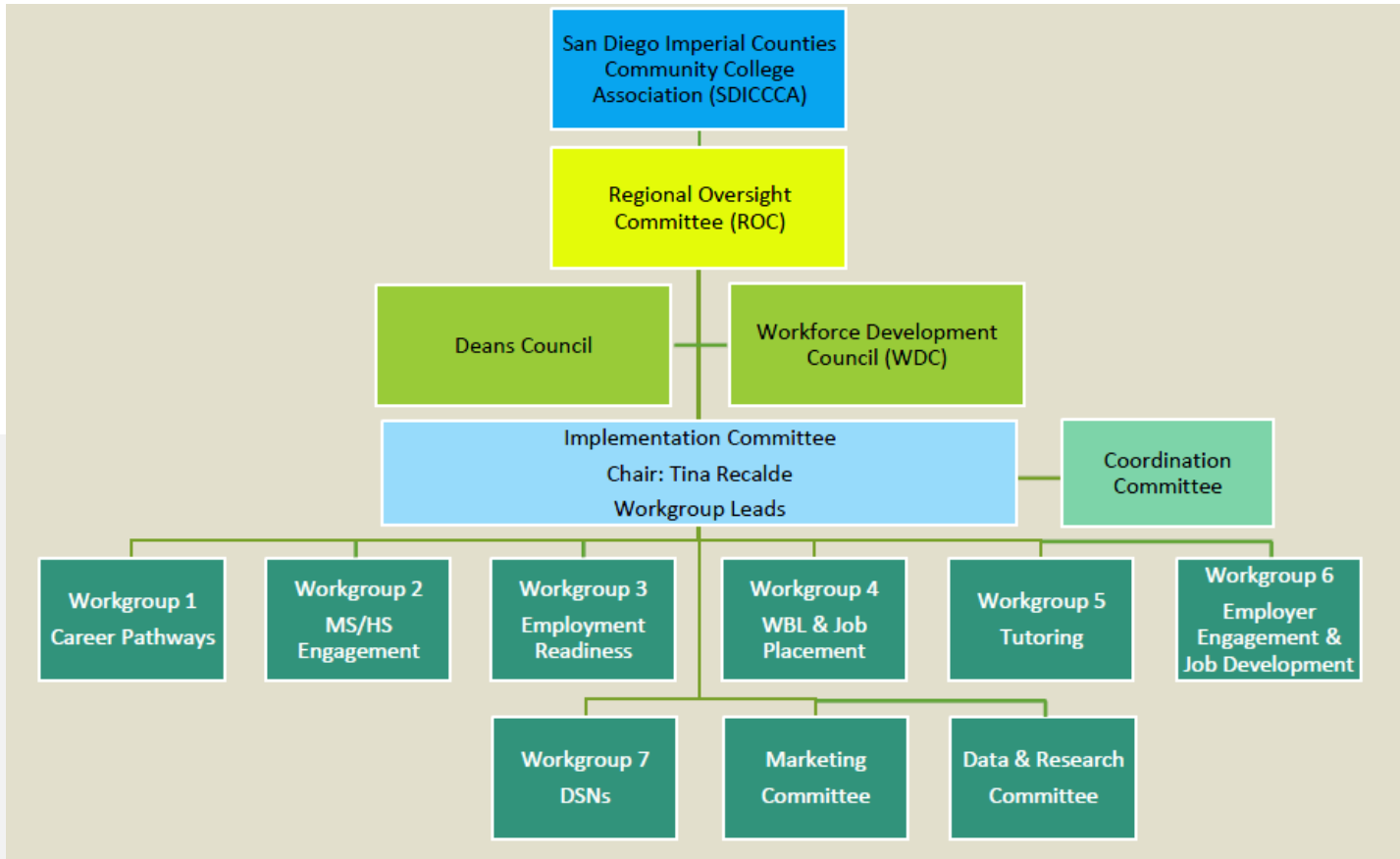
Timeline, Teams, Consultations

**04**

## **Questions/Comments?**

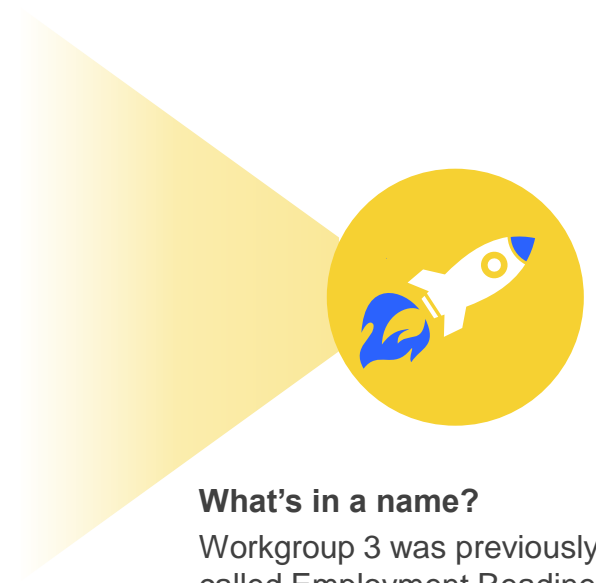
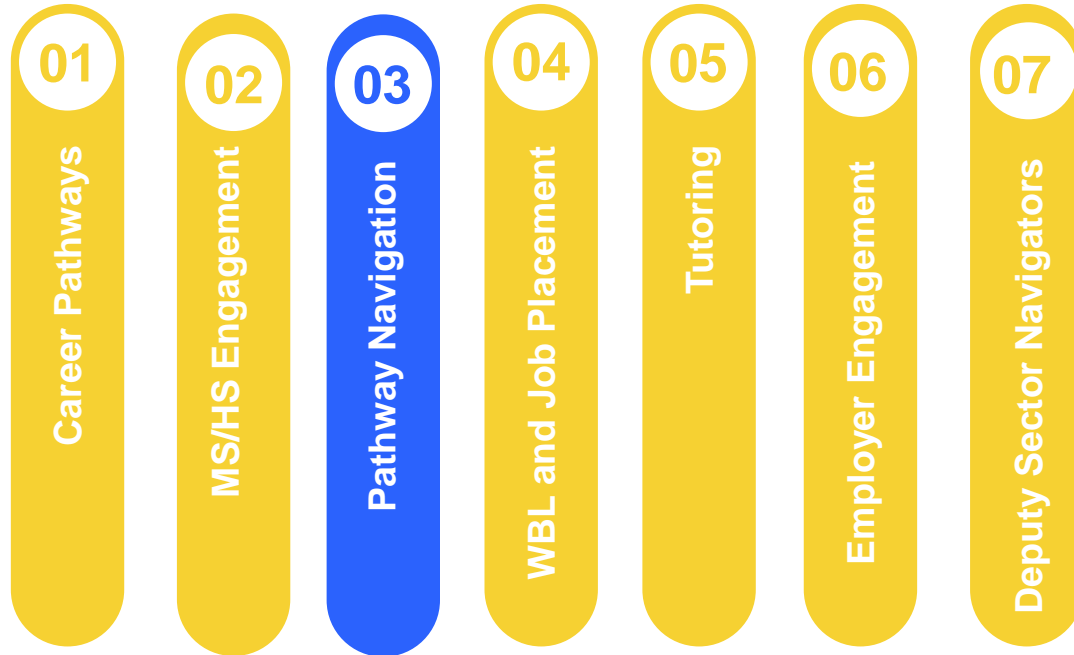


What is a SW regional  
project?



# Regional Work Groups

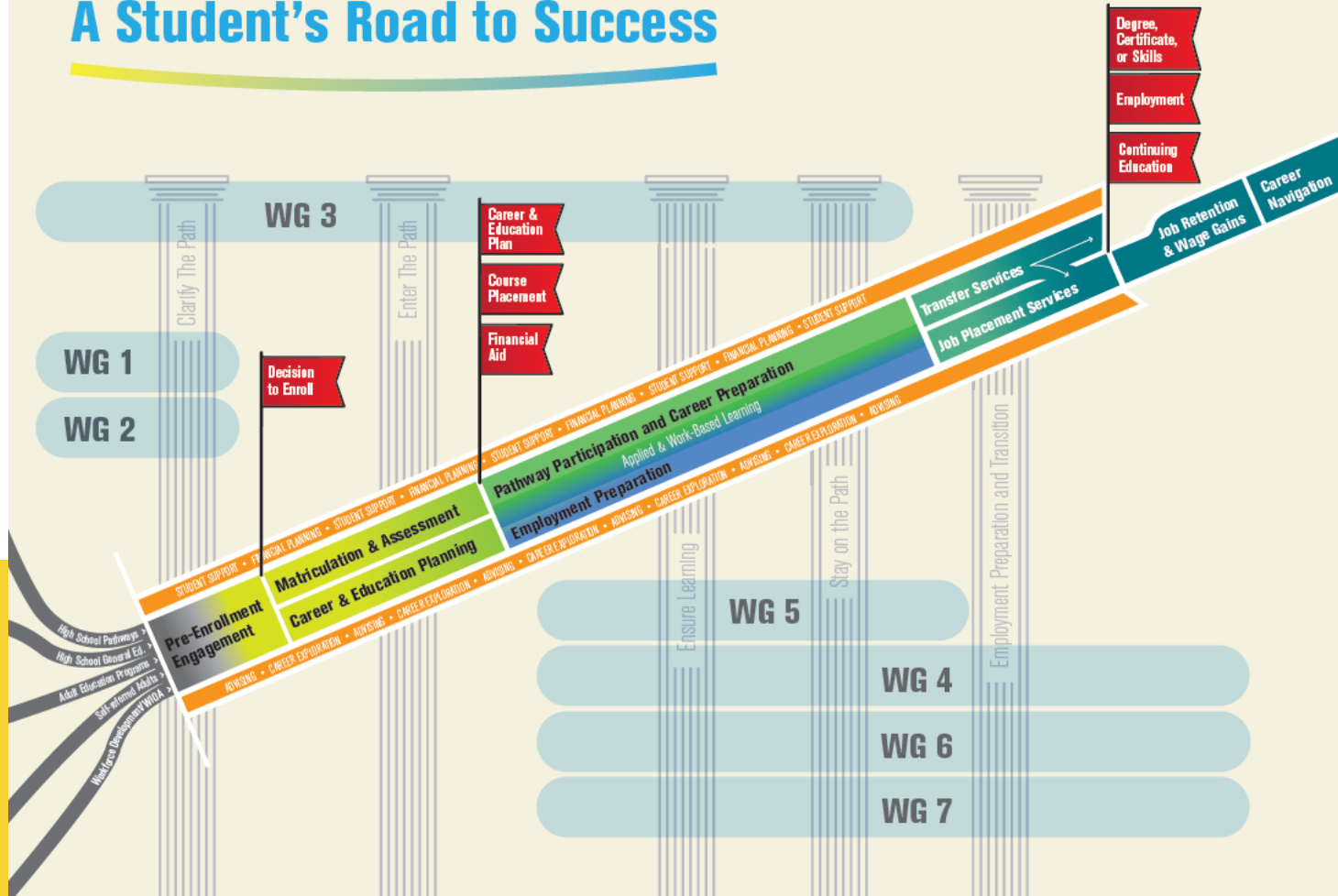
7 total



**What's in a name?**  
Workgroup 3 was previously called Employment Readiness

# San Diego/Imperial Counties Strong Workforce Program

## A Student's Road to Success



# Regional Recommendations

8 overarching

01

## Pre-enrollment engagement

1.1 Connections with high schools and adult schools

**1.2 Intake forms**

**1.3 Early Career Exploration**

02

## Differentiated Orientation

**2.1 Differentiated orientation**

2.2 Comprehensive assessment

2.3 Consistent and coordinated advising

03

## Career and Education Planning

3.1 Transfer plans linked to career and education plans

**3.2 Career plans before education plans**

3.3 early career exploration opportunities for students

3.4 Staff capacity-building

3.5 Career preparation orientation courses

# Our Why



**If you don't know where you are going you will probably end up somewhere else.**  
**-Laurence J. Peter.**





# Pathway Navigation

Strong Workforce Regional Workgroup #3



## Intake

Comprehensive, intake form and practices

## Early Career Exploration

Identification of possible programs of study

## Differentiated orientation

Interactive and electronic means

## Career plans before education plans

Before selecting course of study

# Funding Model

**Year one**

**\$50**

**Project Starts**

Start date is  
January 2019  
upon approved  
RFA

**Year 2**

**\$100**

**Funding continues**


Funding contingent on  
year 1

**Year 3**

**\$75**

**Last year of funding**

Funding contingent on  
year 2



**\$225,000**

# Request for Application (RFA)

Timeline Fall 2018





Thank you