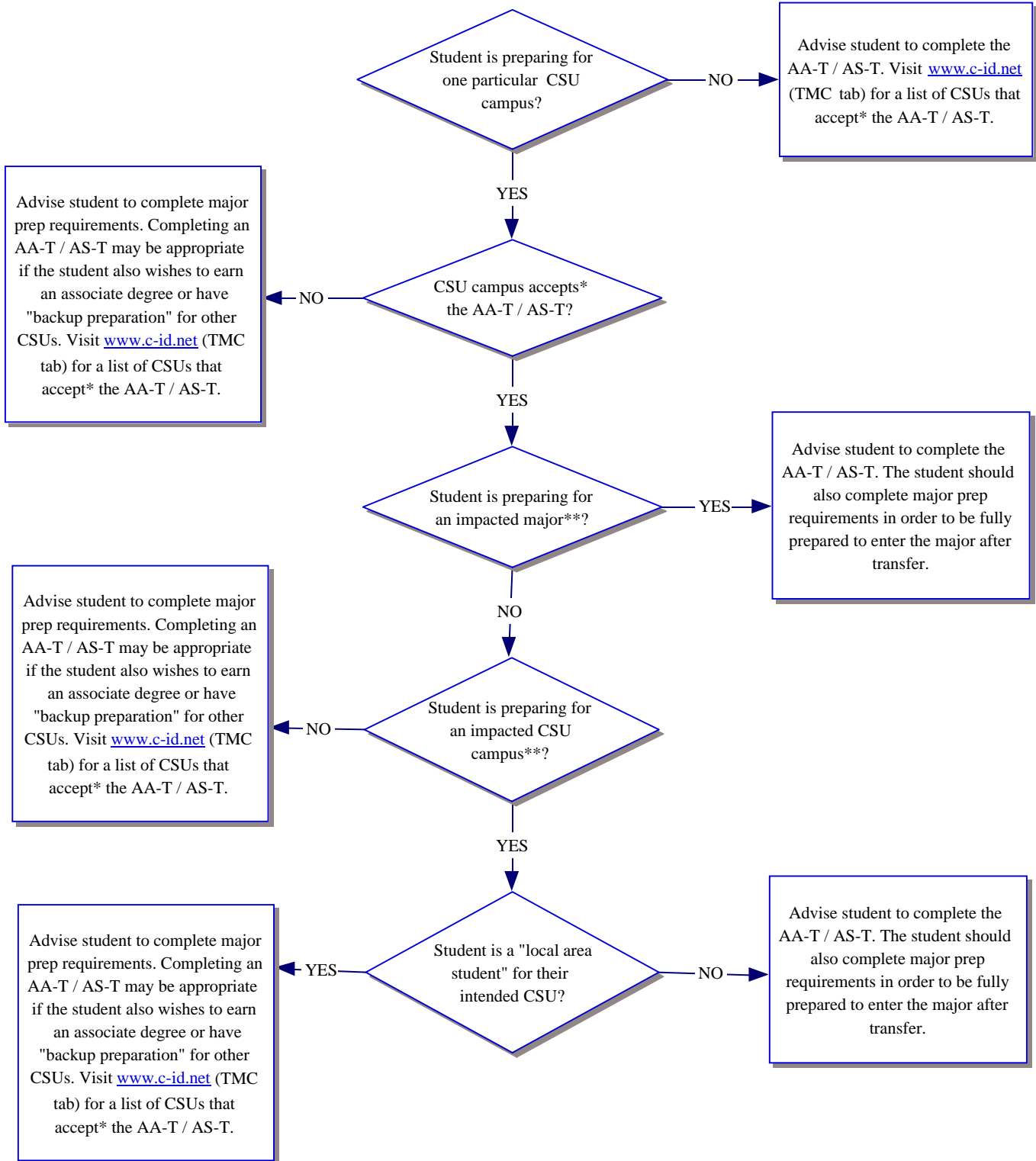


AA-T / AS-T Admission Advising Tool



* "Accept" means that for students with an AA-T / AS-T the CSU campus:

1. Will apply agreed-upon SB-1440 admission priority rules.
2. Has determined that no more than 60 units after transfer is required in order to complete the bachelor's degree in a similar CSU major.

** Information on CSU major and campus impaction is available at www.calstate.edu/sas/impactioninfo.shtml