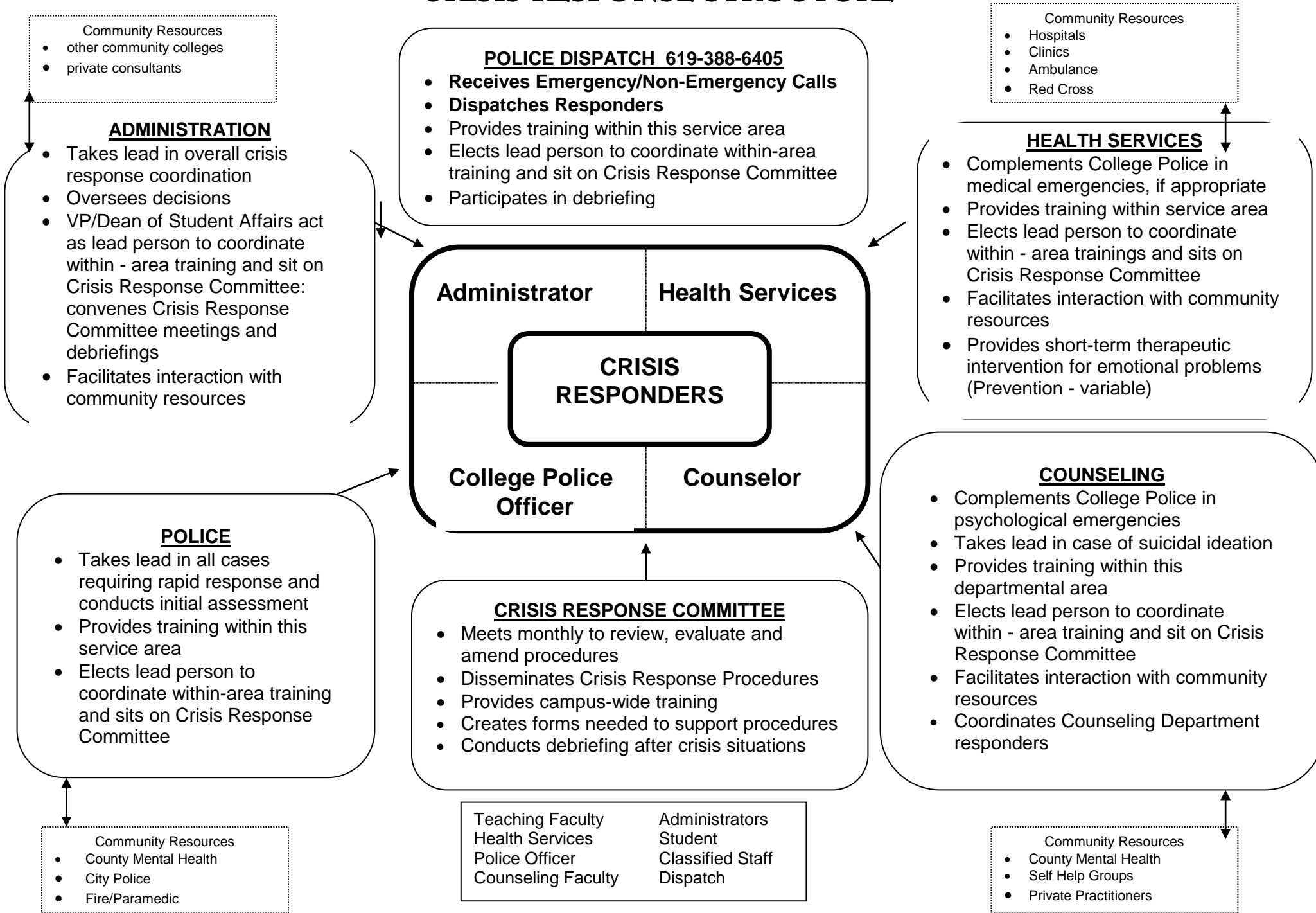


# SAN DIEGO MESA COLLEGE CRISIS RESPONSE STRUCTURE

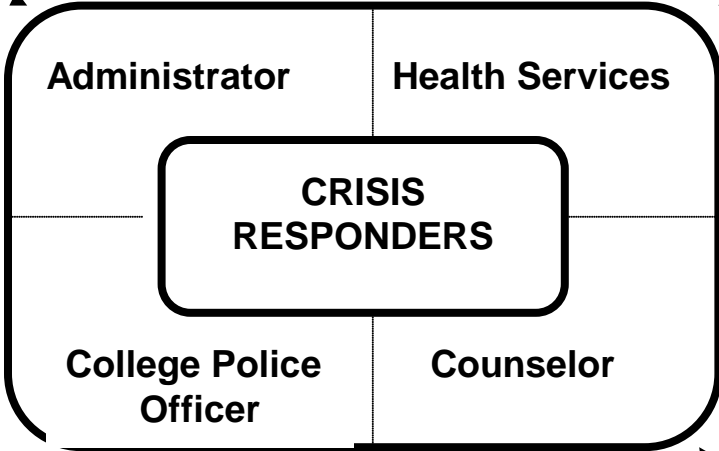


- Community Resources
- other community colleges
  - private consultants

### ADMINISTRATION

- Takes lead in overall crisis response coordination
- Oversees decisions
- VP/Dean of Student Affairs act as lead person to coordinate within - area training and sit on Crisis Response Committee: convenes Crisis Response Committee meetings and debriefings
- Facilitates interaction with community resources

- POLICE DISPATCH 619-388-6405**
- **Receives Emergency/Non-Emergency Calls**
  - **Dispatches Responders**
  - Provides training within this service area
  - Elects lead person to coordinate within-area training and sit on Crisis Response Committee
  - Participates in debriefing



- Community Resources
- Hospitals
  - Clinics
  - Ambulance
  - Red Cross

### HEALTH SERVICES

- Complements College Police in medical emergencies, if appropriate
- Provides training within service area
- Elects lead person to coordinate within - area trainings and sits on Crisis Response Committee
- Facilitates interaction with community resources
- Provides short-term therapeutic intervention for emotional problems (Prevention - variable)

- POLICE**
- Takes lead in all cases requiring rapid response and conducts initial assessment
  - Provides training within this service area
  - Elects lead person to coordinate within-area training and sits on Crisis Response Committee

- Community Resources
- County Mental Health
  - City Police
  - Fire/Paramedic

- CRISIS RESPONSE COMMITTEE**
- Meets monthly to review, evaluate and amend procedures
  - Disseminates Crisis Response Procedures
  - Provides campus-wide training
  - Creates forms needed to support procedures
  - Conducts debriefing after crisis situations

- |                    |                  |
|--------------------|------------------|
| Teaching Faculty   | Administrators   |
| Health Services    | Student          |
| Police Officer     | Classified Staff |
| Counseling Faculty | Dispatch         |

- COUNSELING**
- Complements College Police in psychological emergencies
  - Takes lead in case of suicidal ideation
  - Provides training within this departmental area
  - Elects lead person to coordinate within - area training and sit on Crisis Response Committee
  - Facilitates interaction with community resources
  - Coordinates Counseling Department responders

- Community Resources
- County Mental Health
  - Self Help Groups
  - Private Practitioners