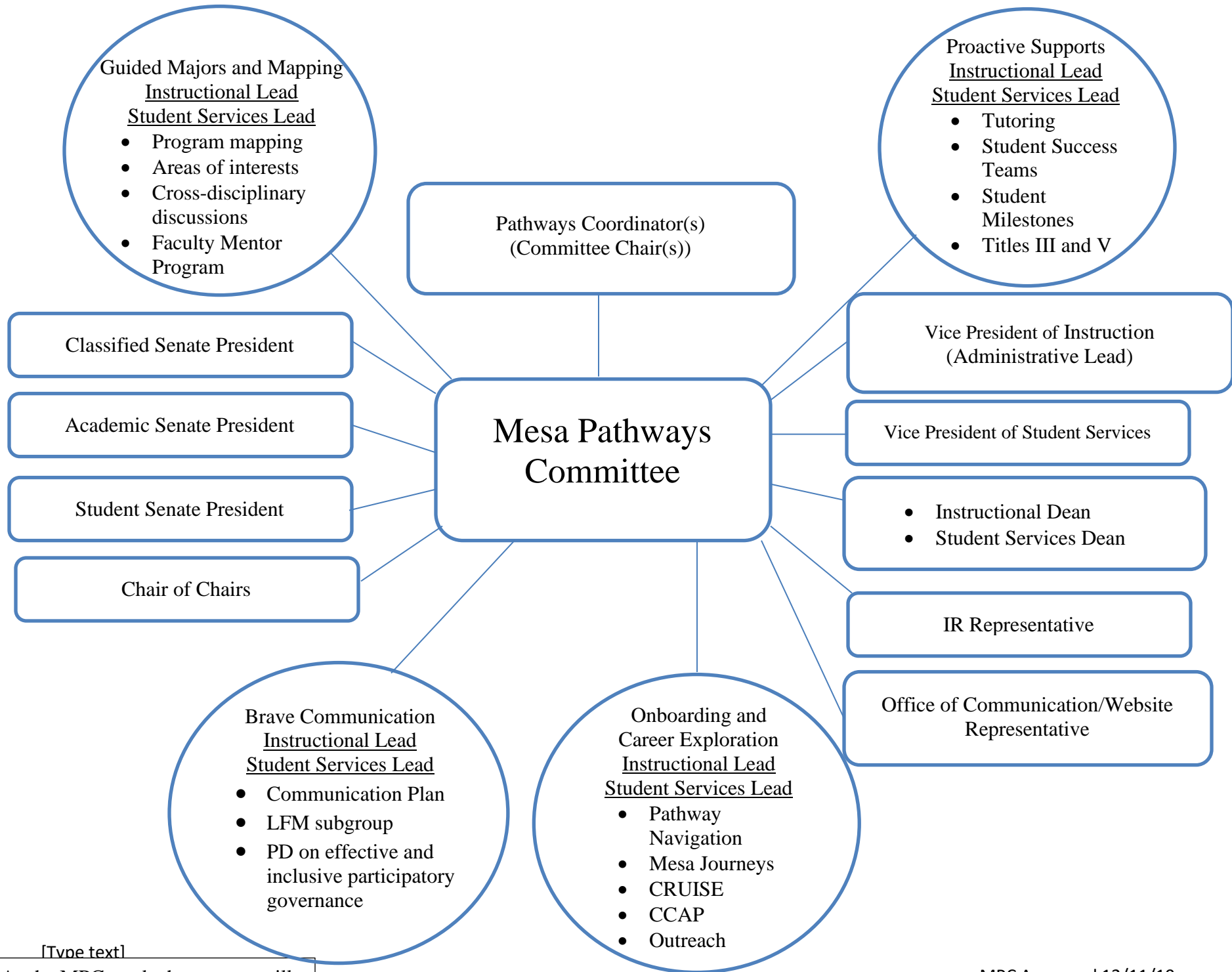


The Mesa Pathways Committee (MPC) uses an integrated, equity-minded, student-centered approach to facilitate student success. Through structured educational experiences, MPC works to close equity gaps, improve student outcomes and guide students into and through college to the completion of personal, academic and professional goals.

Role	Responsibilities
Vice President of Instruction	<ul style="list-style-type: none"> • Administrative Lead • Budget holder • Works with coordinator(s) on agenda setting and overall Pathways coordination • Report to P Cab and PIE
Pathways Coordinator (s)	<ul style="list-style-type: none"> • Overall coordination of all Pathways activities • Chair(s) of MPC meetings • Sit in on all work-group meetings • Organize professional development and other MPC activities • Attend local, district, regional, and state workshops and activities around Guided Pathways • Manage website with agendas, minutes, and other communication • Report to P Cab, and Senates, and any other governance committees when asked
<p>Work group Leads</p> <p>Leads can be faculty or staff (admin, classified, spaa, etc.) with expertise in instruction or student service.</p>	<ul style="list-style-type: none"> • Create agenda and minutes for work-group meetings and send to coordinators • Report to MPC • Bring proposals (e.g. PD, activities, technology) to coordinators to be added as agenda items • Attend all MPC meetings as voting members
MPC Members	<ul style="list-style-type: none"> • Attend MPC meetings as voting members • Report MPC work to the constituents they represent • Propose agenda items to the coordinators and VPI • Serve on work groups
Work Group Members	<ul style="list-style-type: none"> • Discuss and implement the work charged to the work group • Bring related ideas to the leaders to take to MPC for further discussion • Vote on items on the work group agenda

- Each work group should consist of individuals from instruction (transfer, CTE, and BSI), student services, and an array of faculty, classified professionals, administration, and students, including individuals working with grants and special programs, with expertise in the work.
- The work of each group should be data informed and inclusive with equity and excellence as its core values.
- Each group may include conversations about technology and professional development and bring proposals to the full committee.



[Type text]

Note: As the MPC work changes, so will this structure.