



## Adjunct Professor Amy Paul

BA Humanities, MA History

**Art History, Color Theory,  
Drawing**

**Contact:**

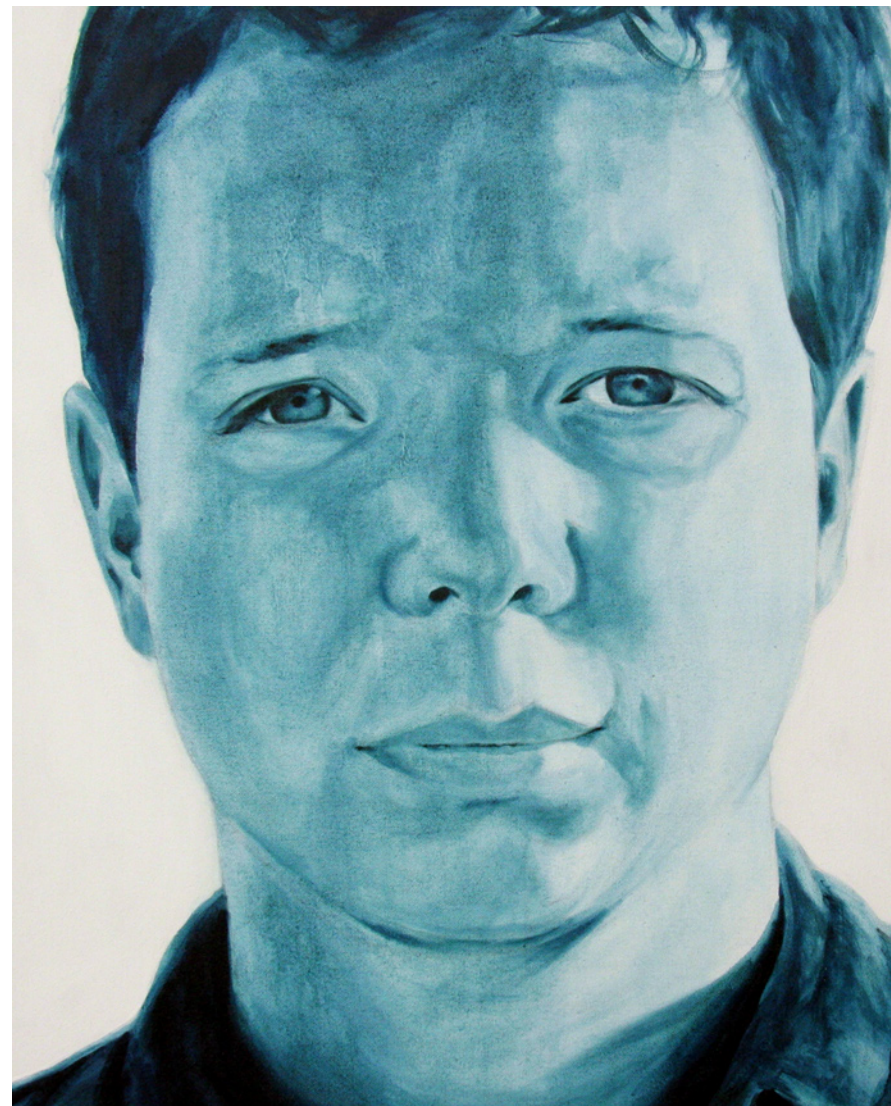
email: [apaul@sdccd.edu](mailto:apaul@sdccd.edu)

### **Bio:**

Amy Paul, MA received both her masters in Art History and her bachelors in Humanities from The University of San Diego. Much of her formal training was under San Diego based artists, Michelle Burgess and South African artist, Claire Gavronsky. In addition to exhibiting her art work each month at North Park's Ray at Night, she produces illustrations for clients including Jenny Craig and Trader Joe's. She teaches classes in drawing, art history and color theory at various San Diego colleges and universities.

### **Recent Accomplishments:**

- 2005 The Ground Up, From a Rut, The Lyceum Theatre and Gallery, San Diego, CA
- 2005 Art a la Carte, St. Marks Episcopal Church Coronado, CA
- 2005 Toward the Feminine, Kava Lounge, San Diego, CA
- 2005 On the Road Again: Faculty Exhibition, Southwestern College, San Diego, CA
- 2005 Book Arts: Exploring the Diverse Spectrum of the Artist Book, Next Door Gallery, San Diego, CA
- 2005 Ray at Night, San Diego Art Department, North Park, CA (monthly exhibition)
- 2005 Gracie's Boutique and Gallery, La Jolla, CA



**"Jessie"** (partial view). 2005  
24" h x 36" l, oil on canvas